

# What does your dog do?



## What is a Service Dog?

Service animals are working animals, not pets.

- A service animal is a dog that is individually trained to do work or perform a task for a person with a disability.
- The trained work or task must be directly related to the person's disability.
- Comfort and emotional support do not qualify as service dog skills.
- Service Dogs are defined by the Americans with Disabilities Act (ADA).

Emotional Support and Companionship are not service dog tasks.

Some examples of tasks include :

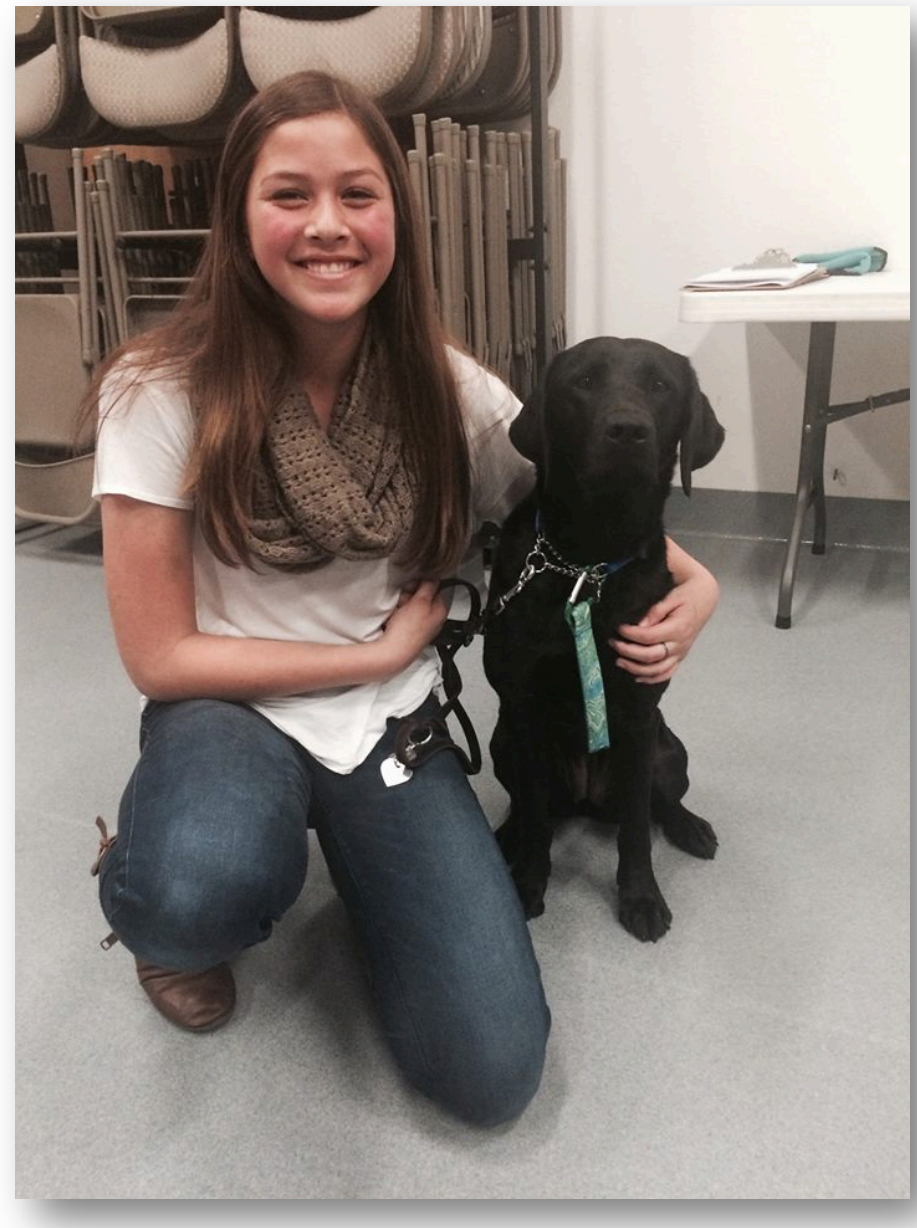
- Turn lights on and off
- Open doors
- Identify sounds
- Alert to oncoming seizures
- Retrieve objects
- Interrupting disruptive or repetitive behaviors
- Provide advance alert to Diabetic highs and lows
- Guiding people who are blind
- Alerting people who are deaf to specific sounds
- Pulling a wheelchair
- Applying deep pressure to help calm a person with a psychological disability or in the Autistic Spectrum



## Access

- Under the ADA, State and local governments, businesses, and nonprofit organizations that serve the public generally must allow service animals to accompany people with disabilities in all areas of the facility where the public is normally allowed to go.
- Establishments that sell or prepare food must allow service animals in public areas even if state or local health codes prohibit animals on the premises.
- People with disabilities who use service animals cannot be isolated from other patrons, treated less favorably than other patrons, or charged fees that are not charged to other patrons without animals. In addition, if a business requires a deposit or fee to be paid by patrons with pets, it must waive the charge for service animals.
- Allergies and fear of dogs are not valid reasons for denying access or refusing service to people using service animals.
- The service dog must be under the handlers control. Under the ADA, service animals must be harnessed, leashed, or tethered, unless these devices interfere with the service animal's work or the individual's disability prevents using these devices. *In that case, the individual must maintain control of the animal through voice, signal, or other effective controls.*
- Service dogs cannot be protective or aggressive .

# The Truth About Service Dogs



## Responsibility

The service dog user or handler is responsible for the dog at all times.

Facilities (schools, restaurants, etc.) are not responsible for the service animal.



## Respect

- Do not touch or talk to a service dog without permission from the handler
- Do not ask about the person's disability
- Do not require documentation
- Do not require a special identification card or training documentation for the dog
- Do not ask that the dog demonstrate its ability to perform the work or task



## Who Qualifies for a Service Dog?

- Adults and children with physical and psychological disabilities may qualify for a service dog
- All candidates must be evaluated individually



## It's OK to Ask

When it is not obvious what service an animal provides, only limited inquiries are allowed

(1) is the dog a service animal required because of a disability

and

(2) what work or task has the dog been trained to perform.

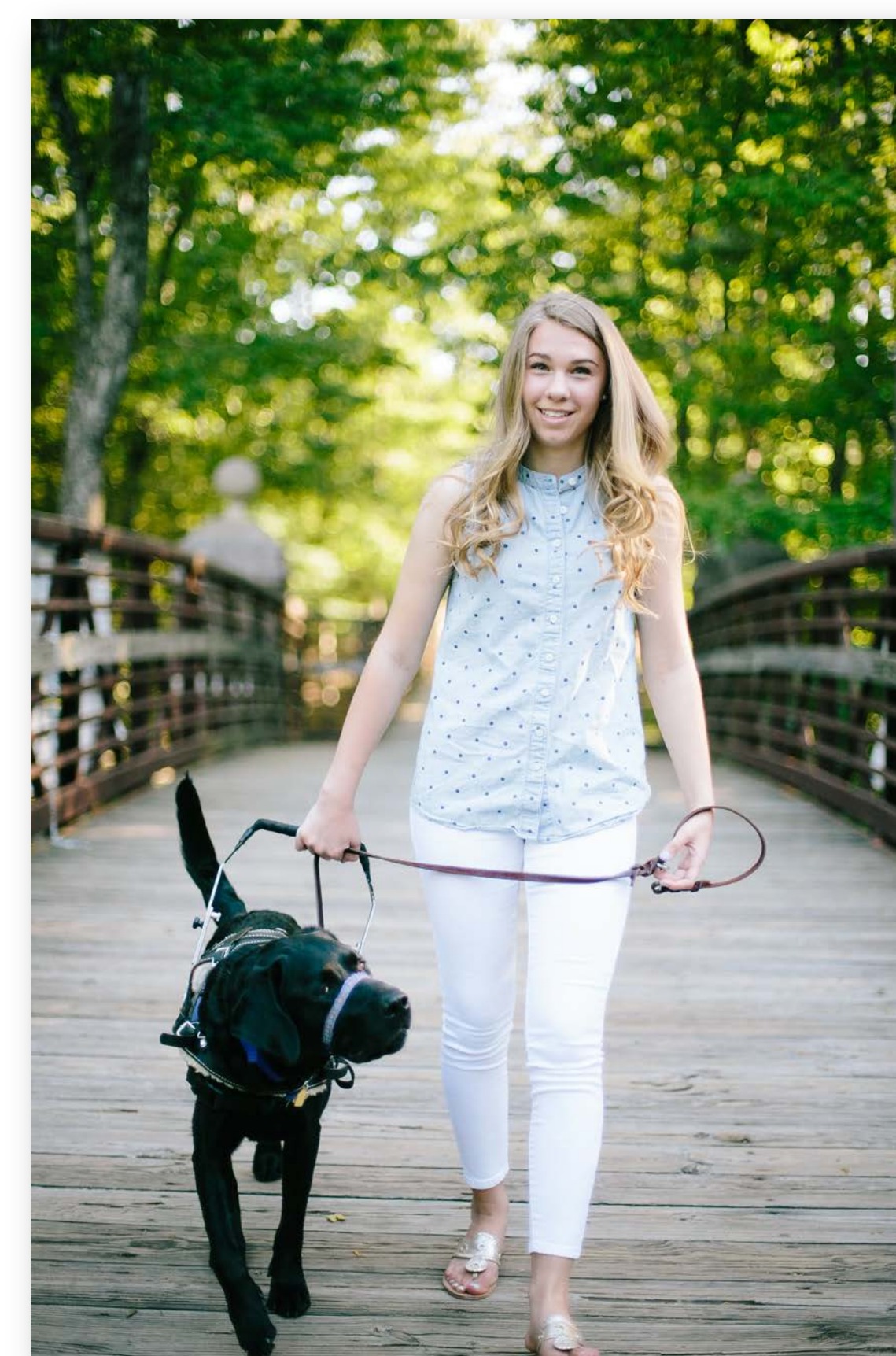
- *Where can I get a service dog?*

Service dogs can be trained by nonprofit and for profit training organizations as well as private / self training . We can help you find your perfect match.

- *3<sup>rd</sup> Party Handler or Facilitation*

When the individual who the service dog is trained for cannot take full responsibility, a 3<sup>rd</sup> party handler or facilitator may be trained as the person who is responsible and must be part of the team in all public environments.

- Service dogs should increase the level of independence their human partners have.



## Canines for Disabled Kids

255 Park Ave, Suite 601

Worcester MA 01609

978- 422- 5299

info@caninesforkids.org

www.caninesforkids.org

www.facebook.com/Caninesforkids

@K94kids